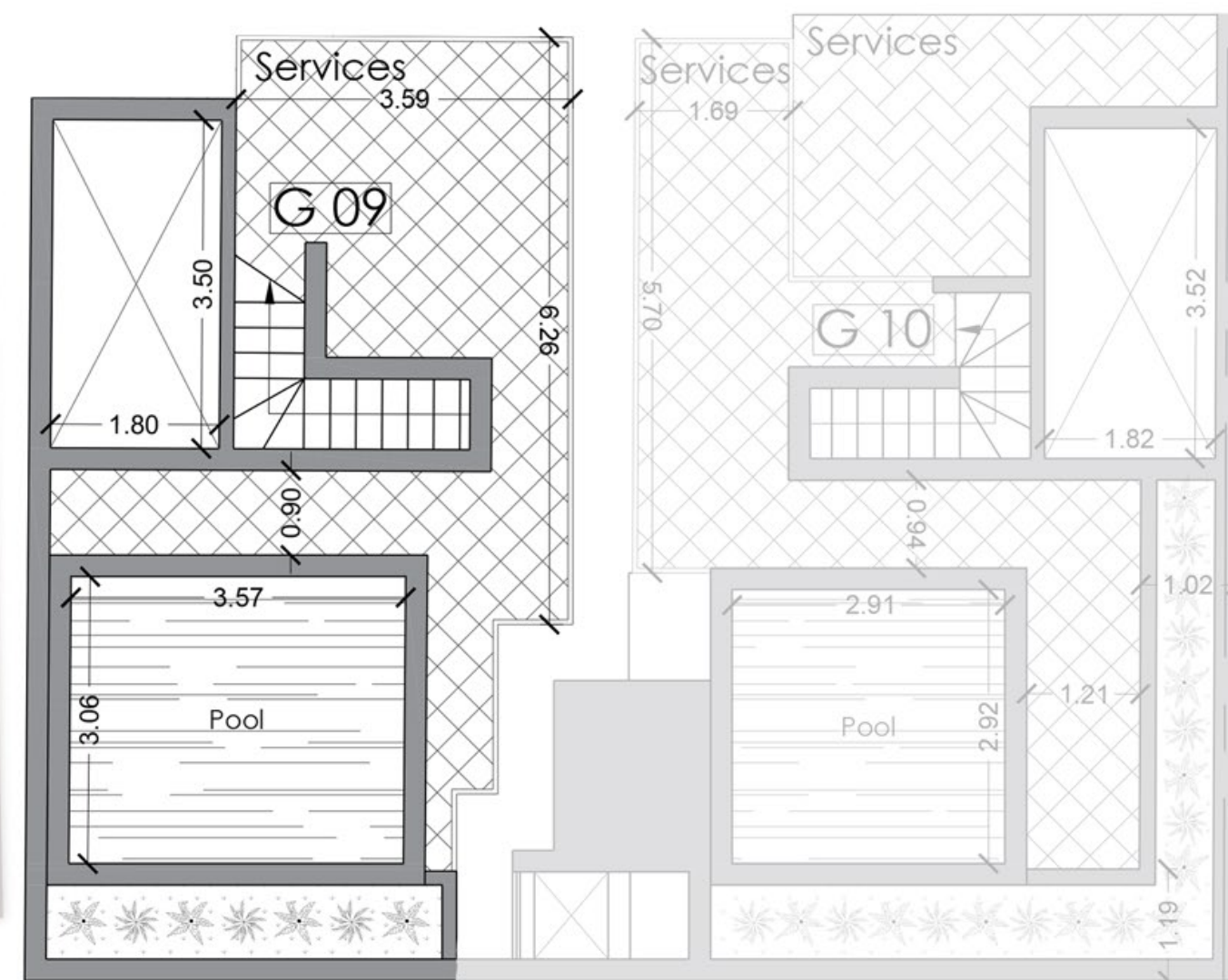


Penthouse : G09
Fourth Floor (Level 7)

Artistic Impressions only
Beams may protrude in various locations
while always maintaining a minimum
headroom of 2.1m

Internal area : 87 m² External area : 24 m²
Total Area : 111 m²



Penthouse : G09
Roof Floor

Artistic Impressions only
Beams may protrude in various locations
while always maintaining a minimum
headroom of 2.1m

External Area : 44 m²