

Penthouse : G10
Fourth Floor (Level 7)

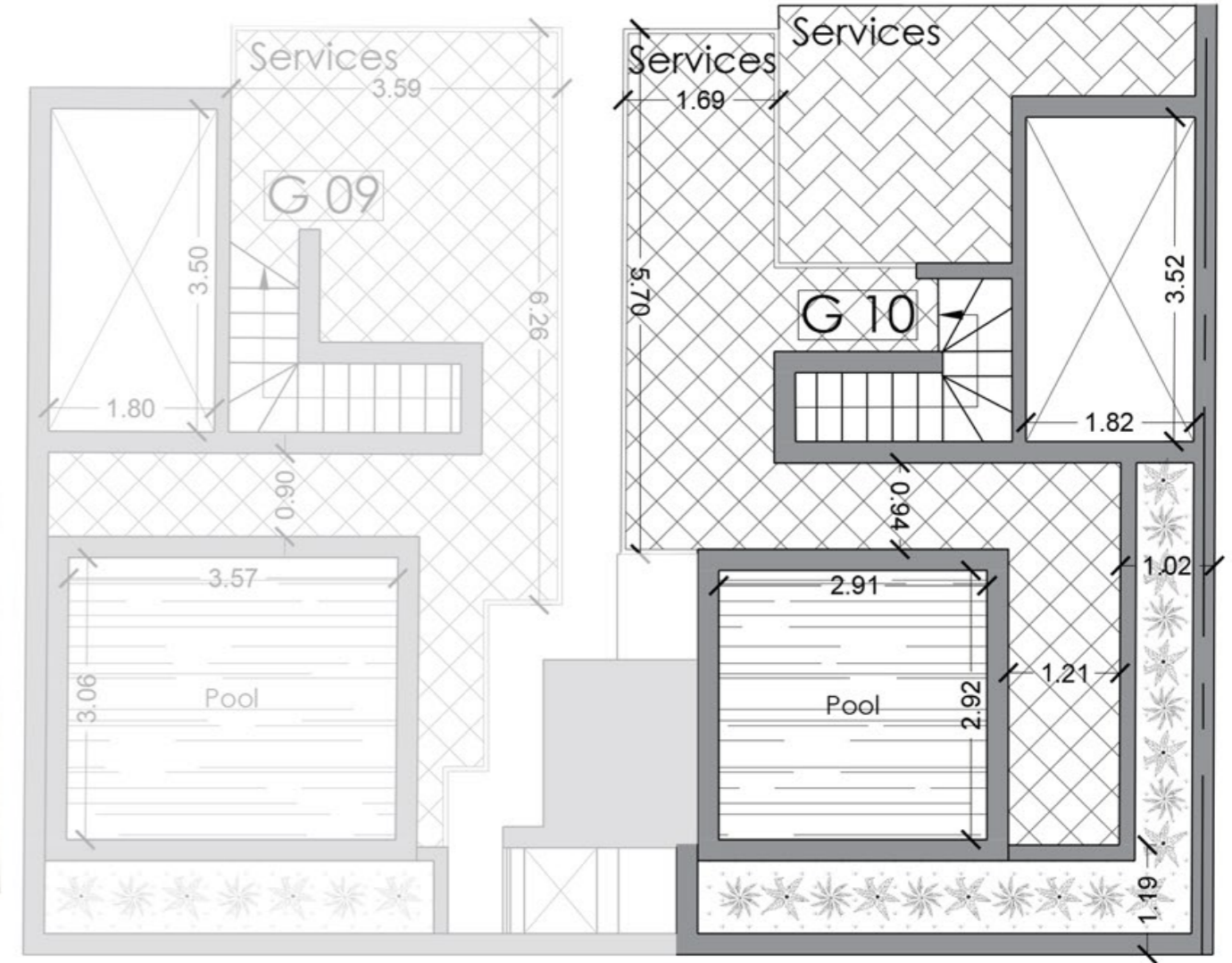
Artistic Impressions only
Beams may protrude in various locations
while always maintaining a minimum
headroom of 2.1m

Internal area : 77 m² External area : 22 m²
Total Area : 99 m²



SCALE 1 : 100

- Level 7
- Level 6
- Level 5
- Level 4
- Level 3 Street Level
- Level 2
- Level 1



SCALE 1 : 100

Penthouse : G10
Roof Floor

Artistic Impressions only
Beams may protrude in various locations
while always maintaining a minimum
headroom of 2.1m

External Area : 44 m²