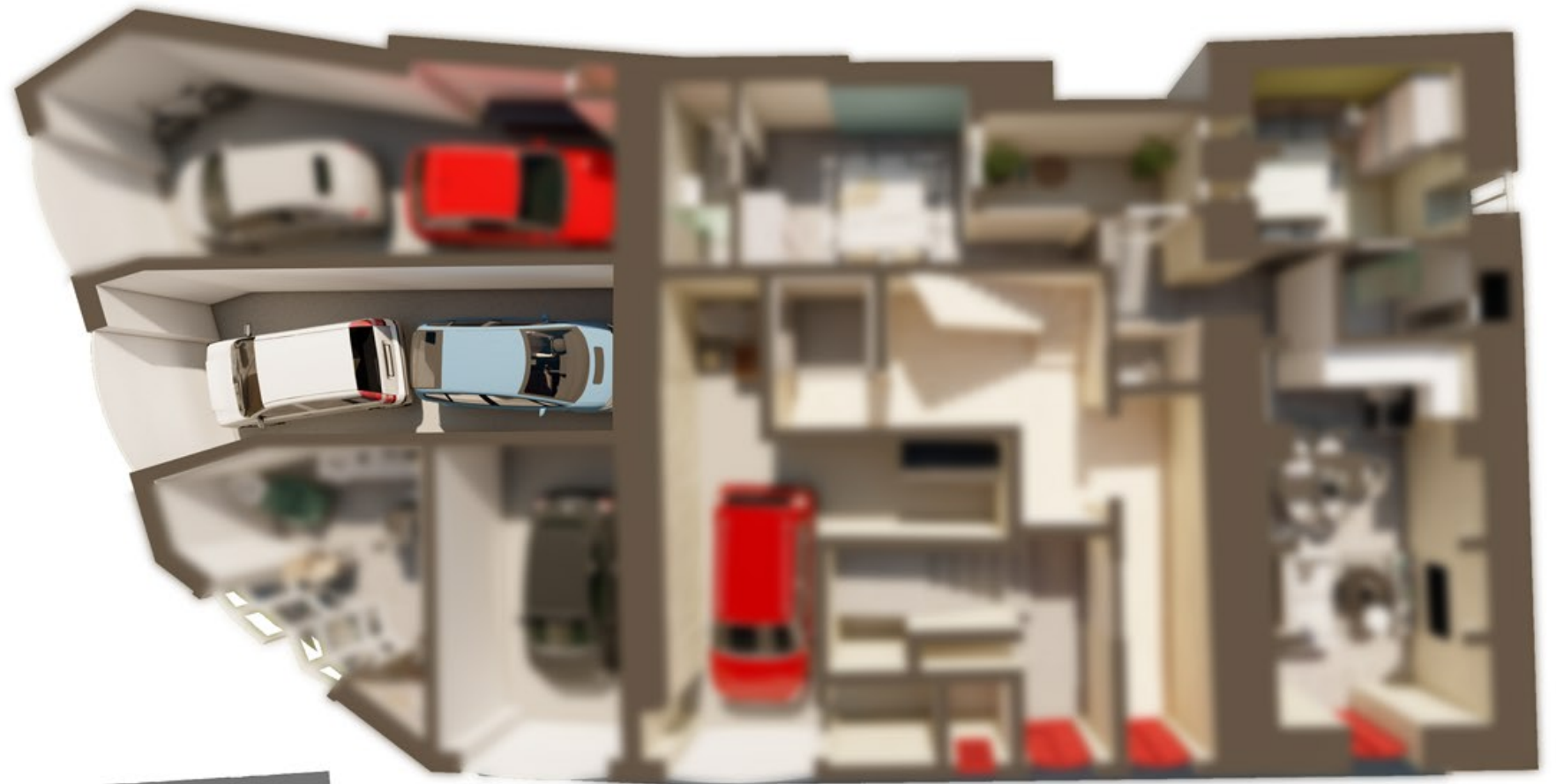


# Reknija

Qala



Level 4
Level 3
Level 2
Level 1
Level 0



Street Level Garage 2  
Ground Floor (Level 0)

Artistic Impression Only  
Beams may protrude with  
minimum headroom of 2.1m

Internal : 25 m<sup>2</sup> External : 0 m<sup>2</sup>  
Total Area : 25 m<sup>2</sup> circa