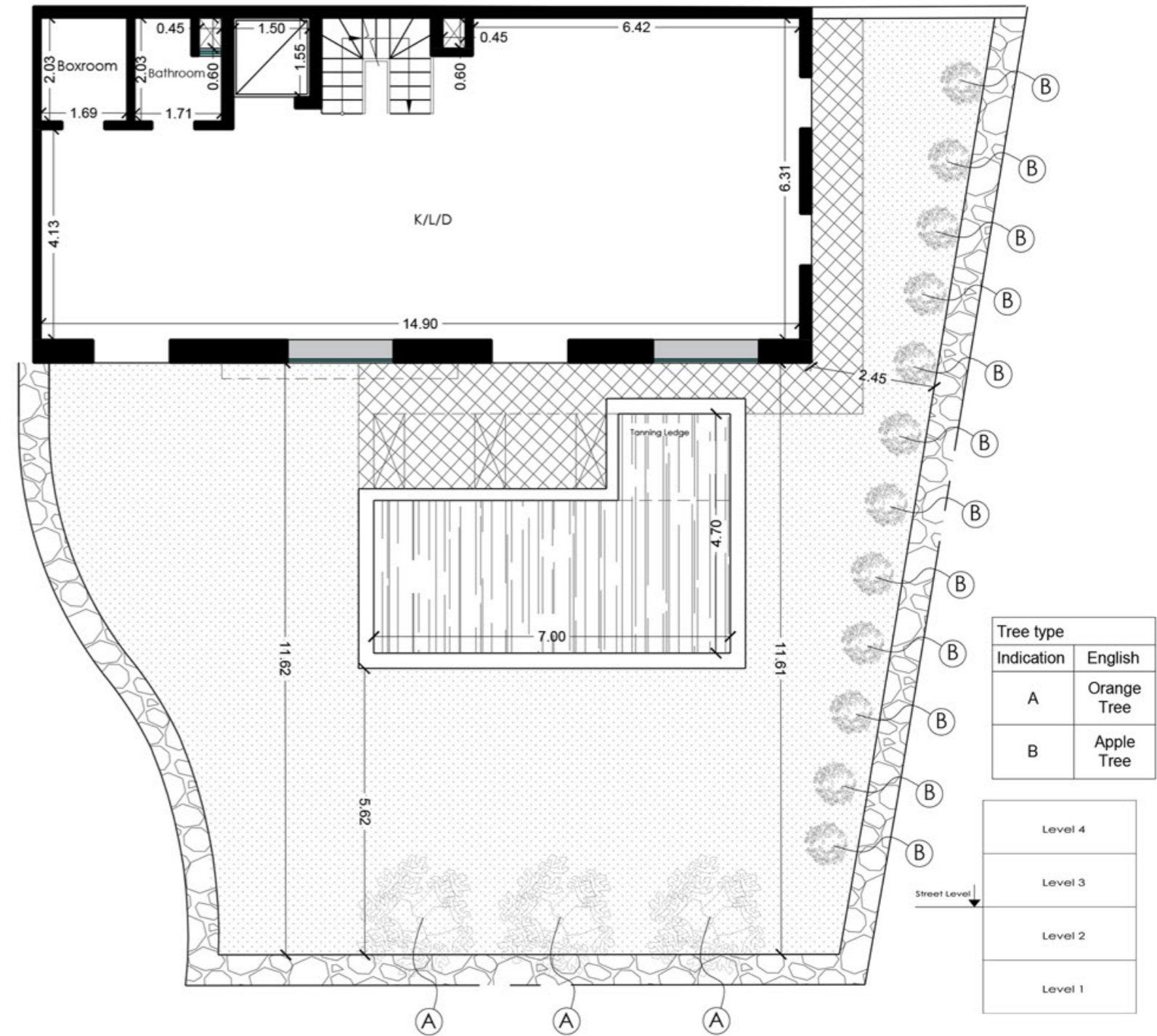
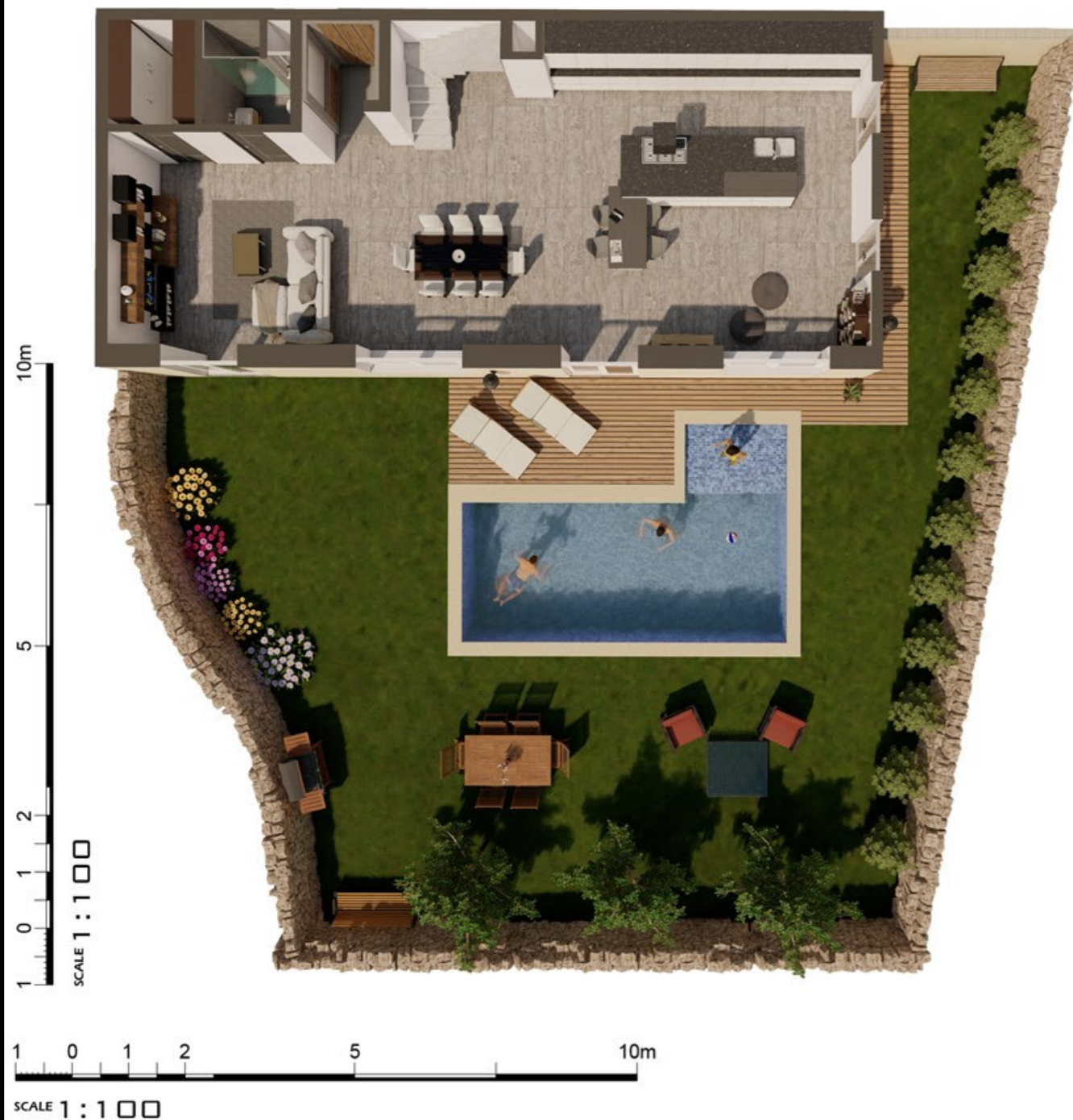


DAR L'AKWADOTT

Victoria



Plot 01
Lower Basement (Level 1)

Artistic Impressions only
Beams may protrude with
minimum headroom of 2.1m

Internal : 106 m² External : 207 m²
Total Area : 313 m² (circa)

DAR L'AKWADOTT

Victoria

10m

5

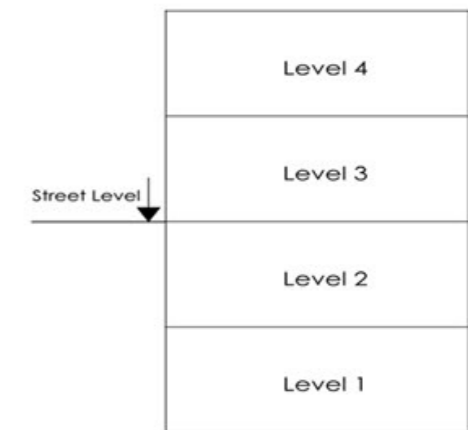
2

1

0

1

SCALE 1 : 1 0 0



1 0 1 2 5 10m

SCALE 1 : 1 0 0

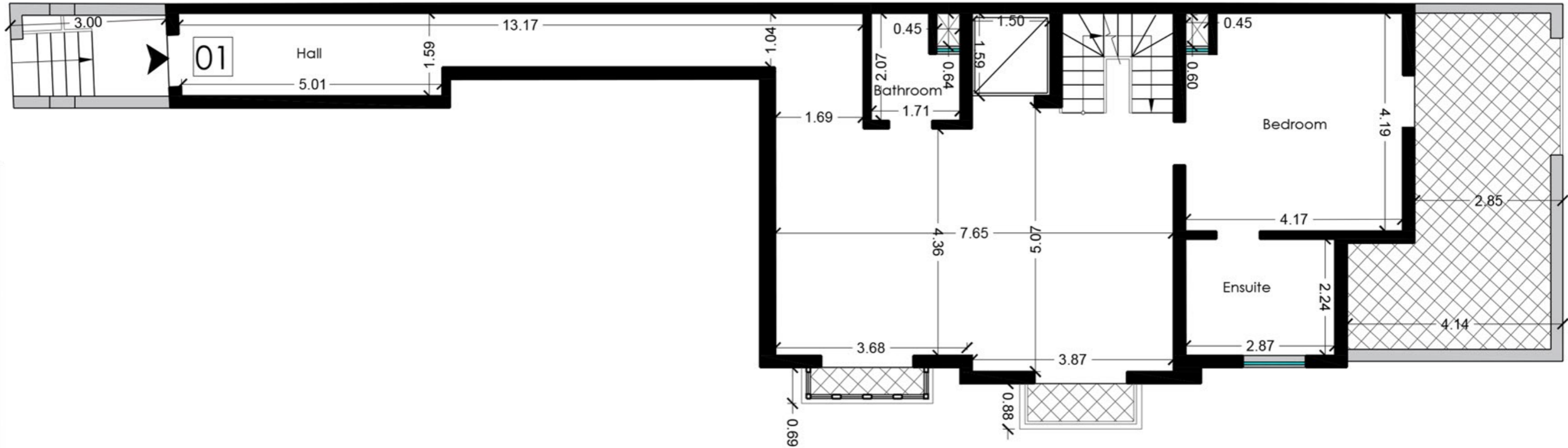
Plot 01
Upper Basement (Level 2)

Artistic Impressions only
Beams may protrude with
minimum headroom of 2.1m

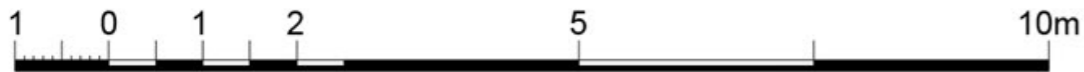
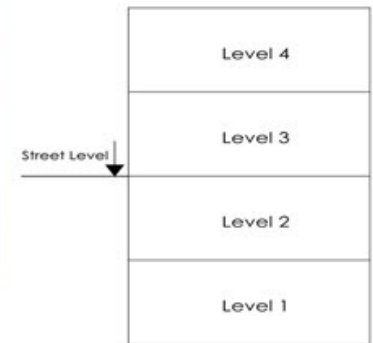
Internal : 106 m² External : 3 m²
Total Area : 109 m² (circa)

DAR L'AKWADOTT

Victoria



SCALE 1 : 100



SCALE 1 : 100

Plot 01
Ground Floor (Level 3)

Artistic Impressions only
Beams may protrude with
minimum headroom of 2.1m

Internal : 103 m² External : 29 m²
Total Area : 132 m² (circa)

DAR L'AKWADOTT

Victoria



10m

5

2

1

0

1

1

SCALE 1 : 100



1

0

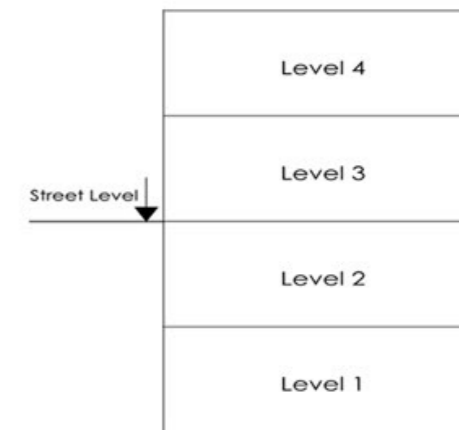
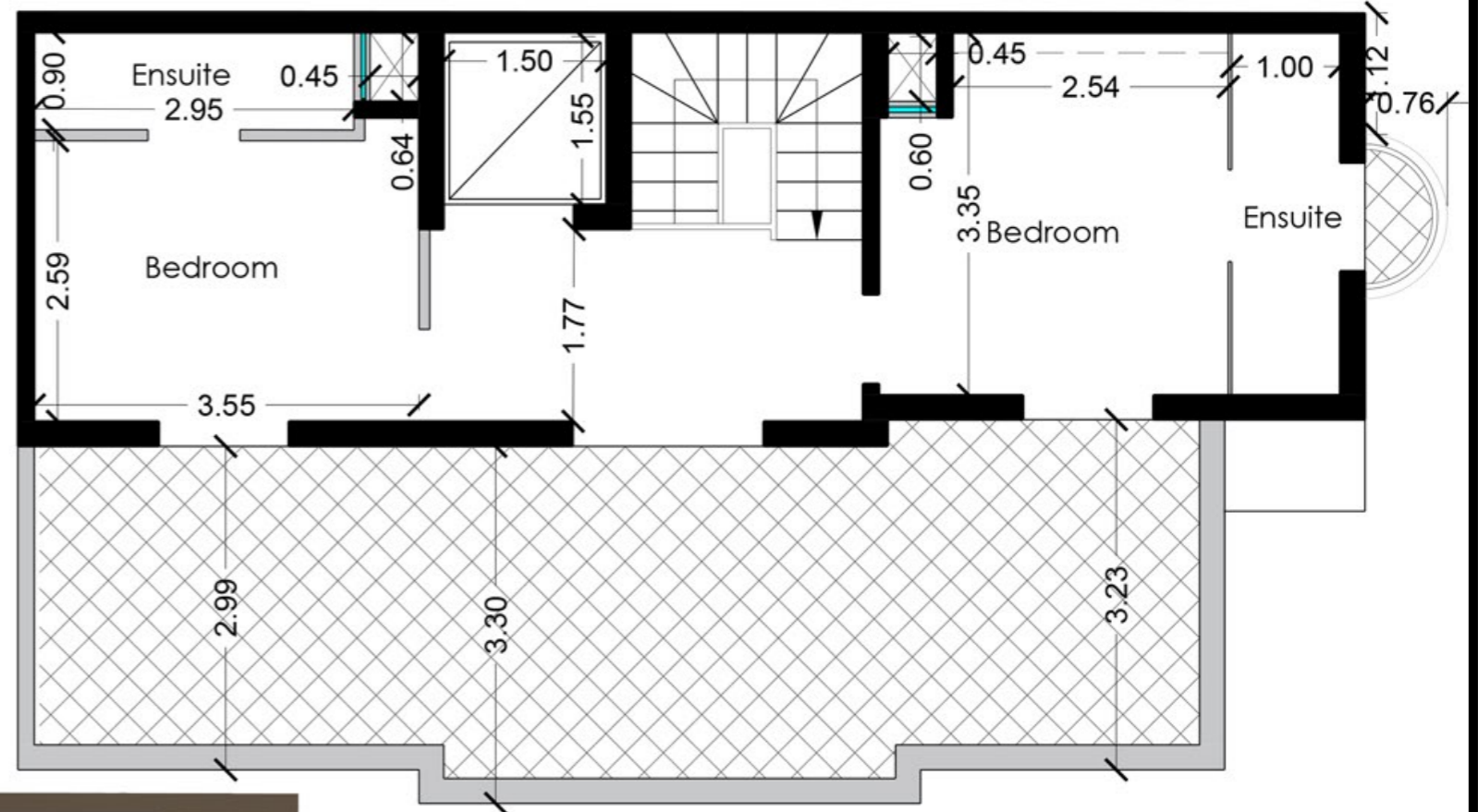
1

2

5

10m

SCALE 1 : 100



Plot 01
First Floor (Level 4)

Artistic Impressions only
Beams may protrude with
minimum headroom of 2.1m

Internal : 48 m² External : 35 m²
Total Area : 83 m² (circa)