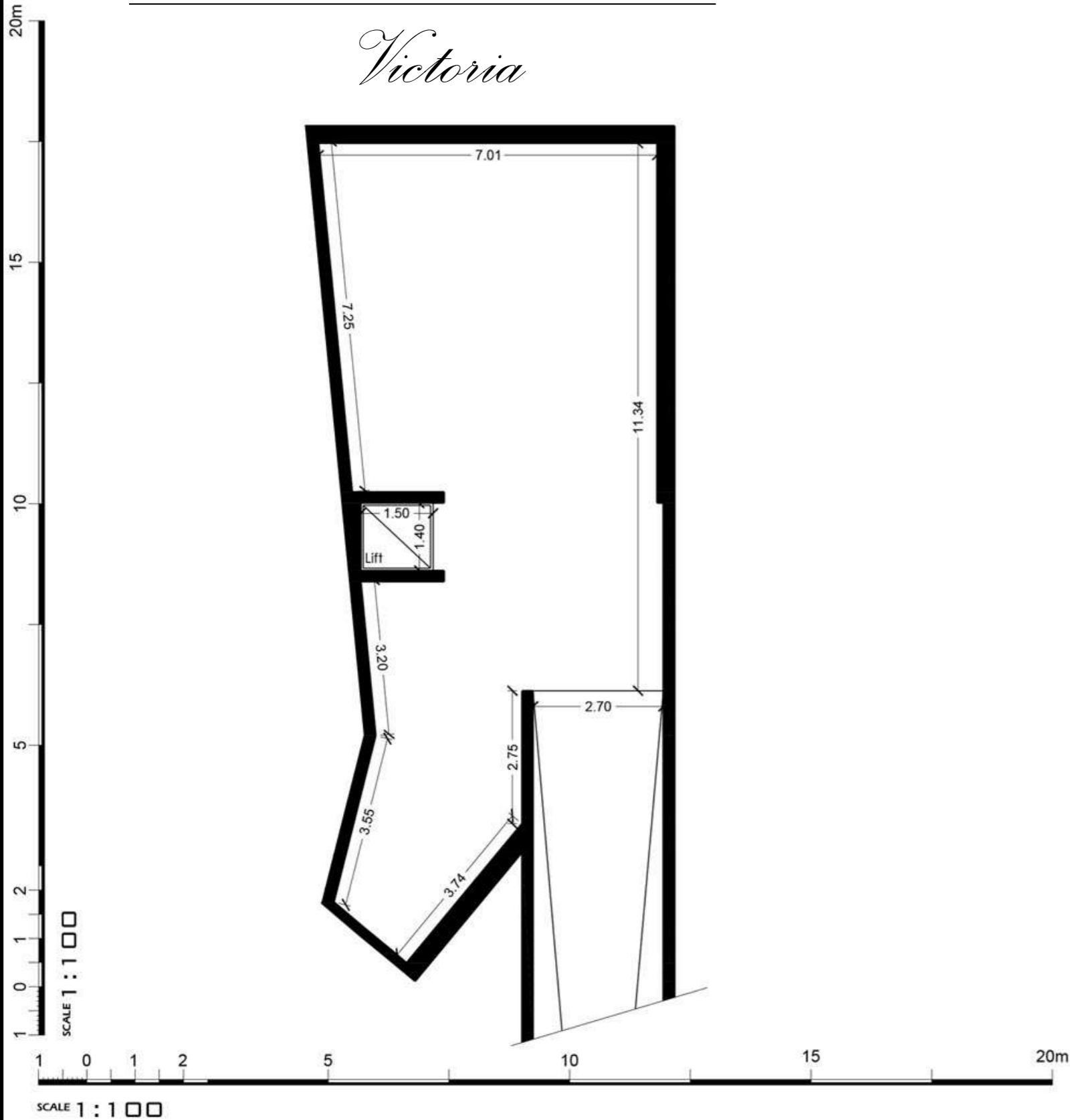


# Dar Al-Hamra

## Victoria



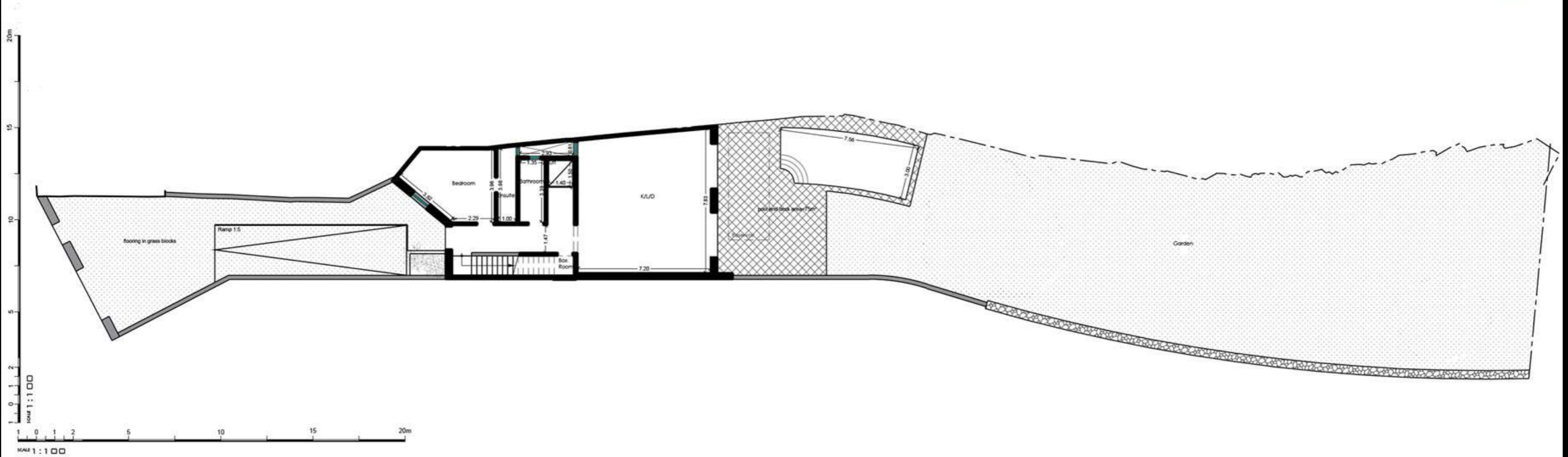
Plot : 01  
Basement Floor (Level 0)

Artistic Impressions only  
Beams may protrude. Minimum  
internal height under beam is 2.1m

Internal : 106 m<sup>2</sup> External : 0 m<sup>2</sup>  
Total Area : 106 m<sup>2</sup>

# Dar Al-Hamra

## Victoria



Plot : 01  
Ground Floor (Level 1)

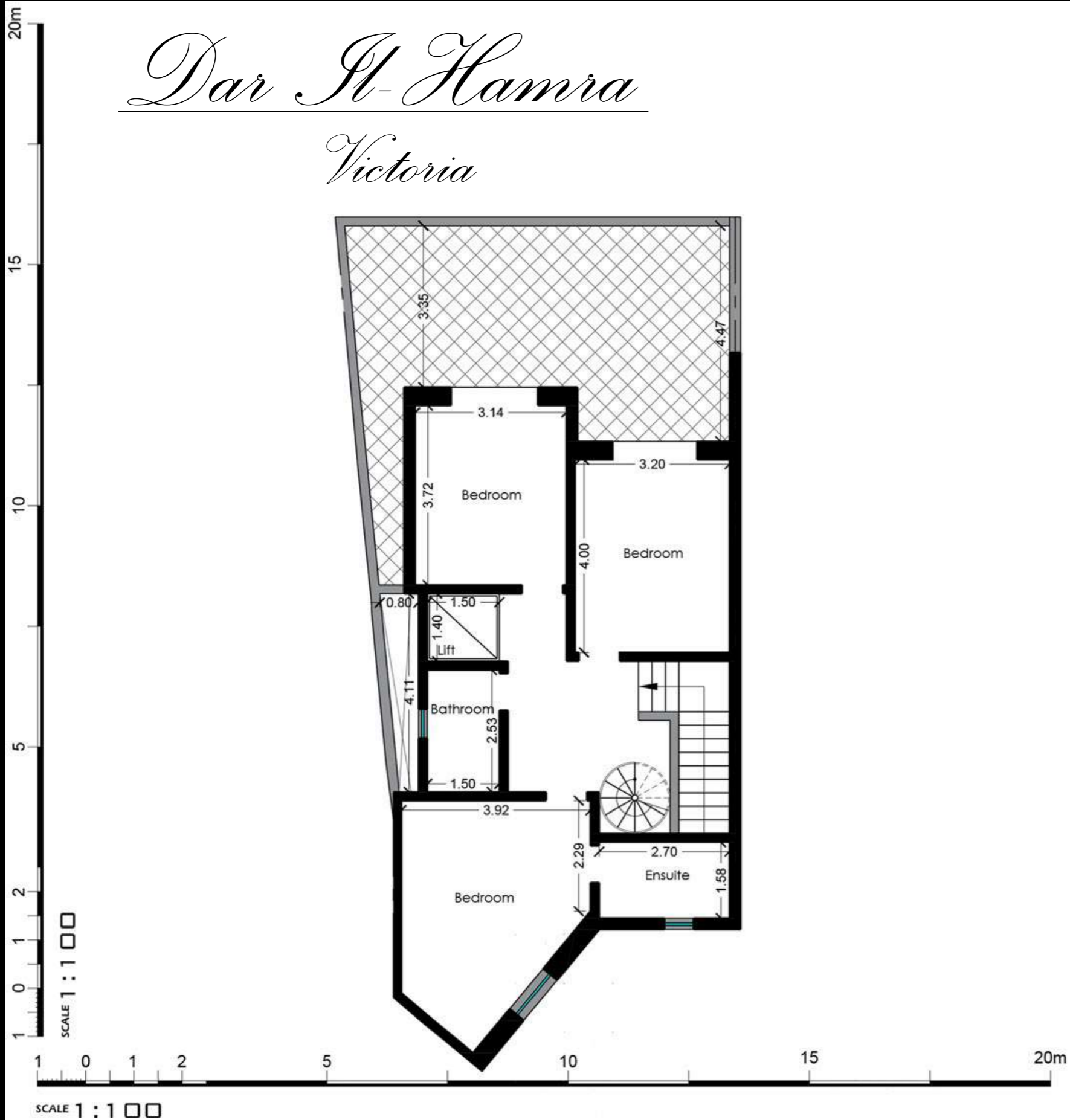
Artistic Impressions only  
Beams may protrude. Minimum  
internal height under beam is 2.1m

Internal : 117 m<sup>2</sup> External : 541 m<sup>2</sup>  
Total Area : 658 m<sup>2</sup>



# Dar Al-Hamra

## Victoria



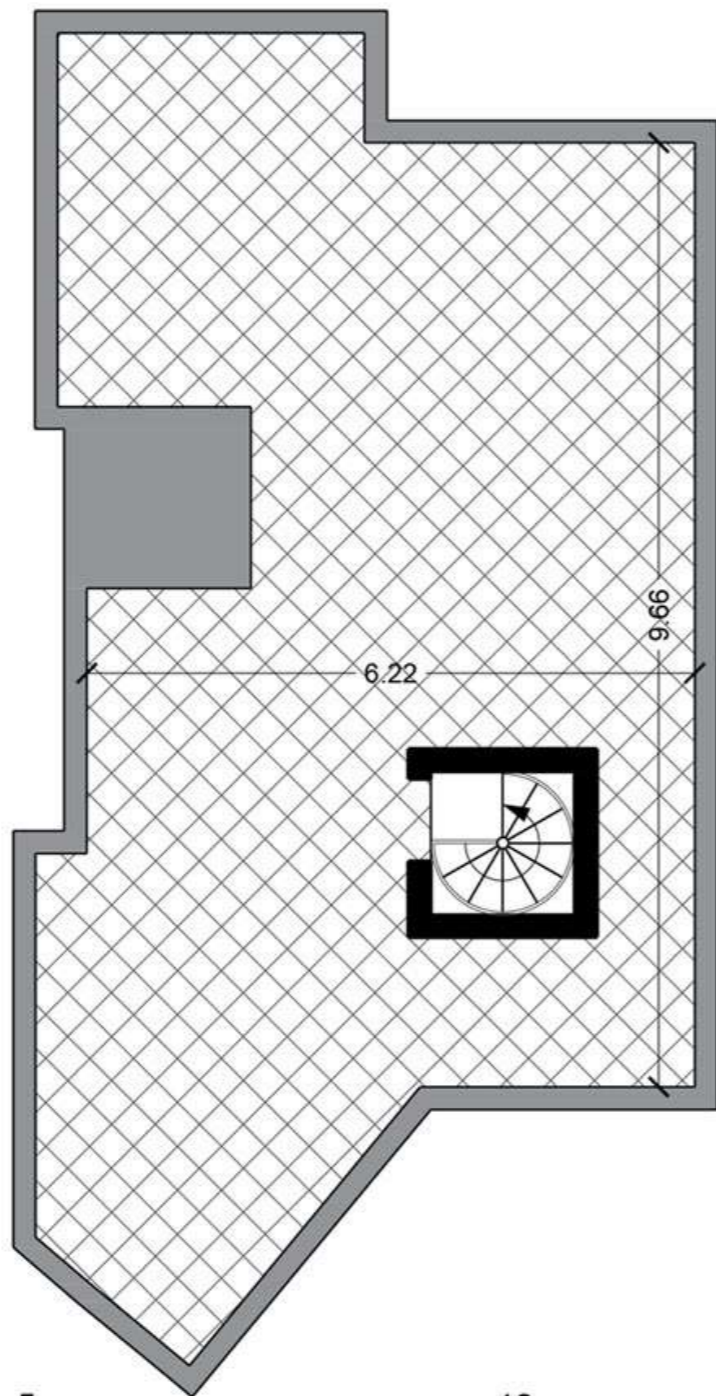
Plot : 01  
First Floor (Level 2)

Artistic Impressions only  
Beams may protrude. Minimum  
internal height under beam is 2.1m

Internal : 80 m<sup>2</sup> External : 36 m<sup>2</sup>  
Total Area : 116 m<sup>2</sup>

# Dar Al-Hamra

## Victoria



SCALE 1 : 1 0 0

Plot : 01  
Roof Floor (Level 3)

Artistic Impressions only  
Beams may protrude. Minimum  
internal height under beam is 2.1m

Internal : 0 m<sup>2</sup> External : 77 m<sup>2</sup>  
Total Area : 77 m<sup>2</sup>