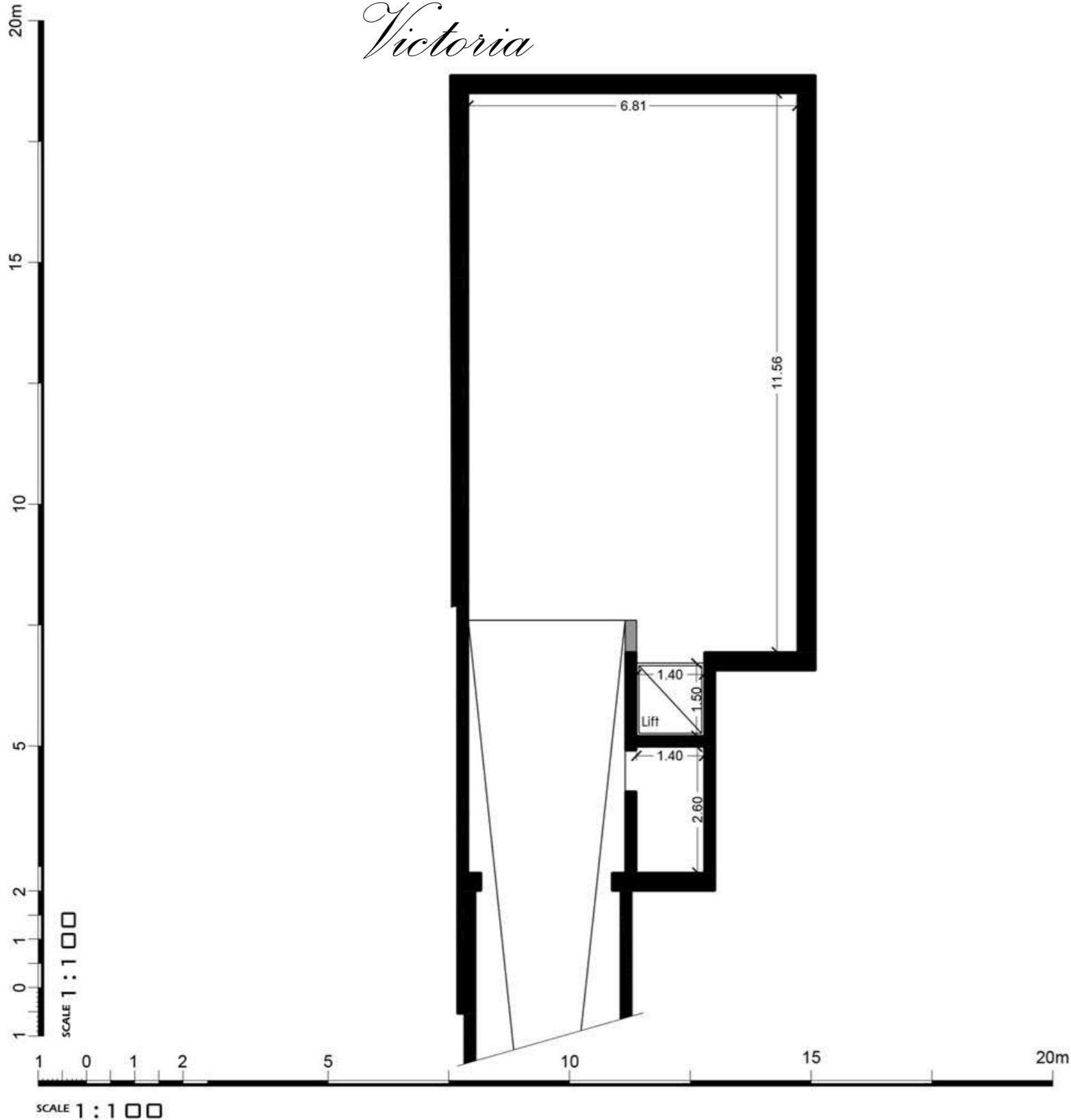


Dar Al-Kahla

Victoria



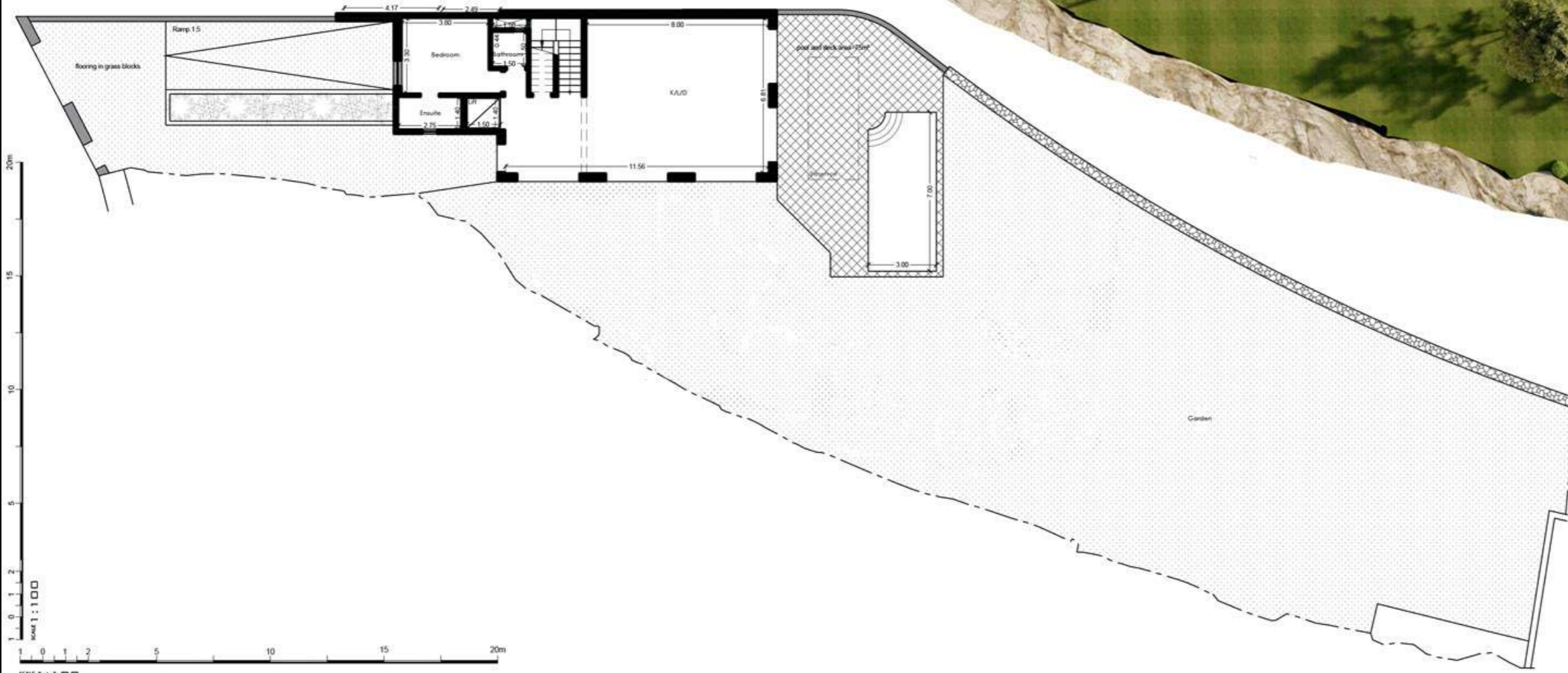
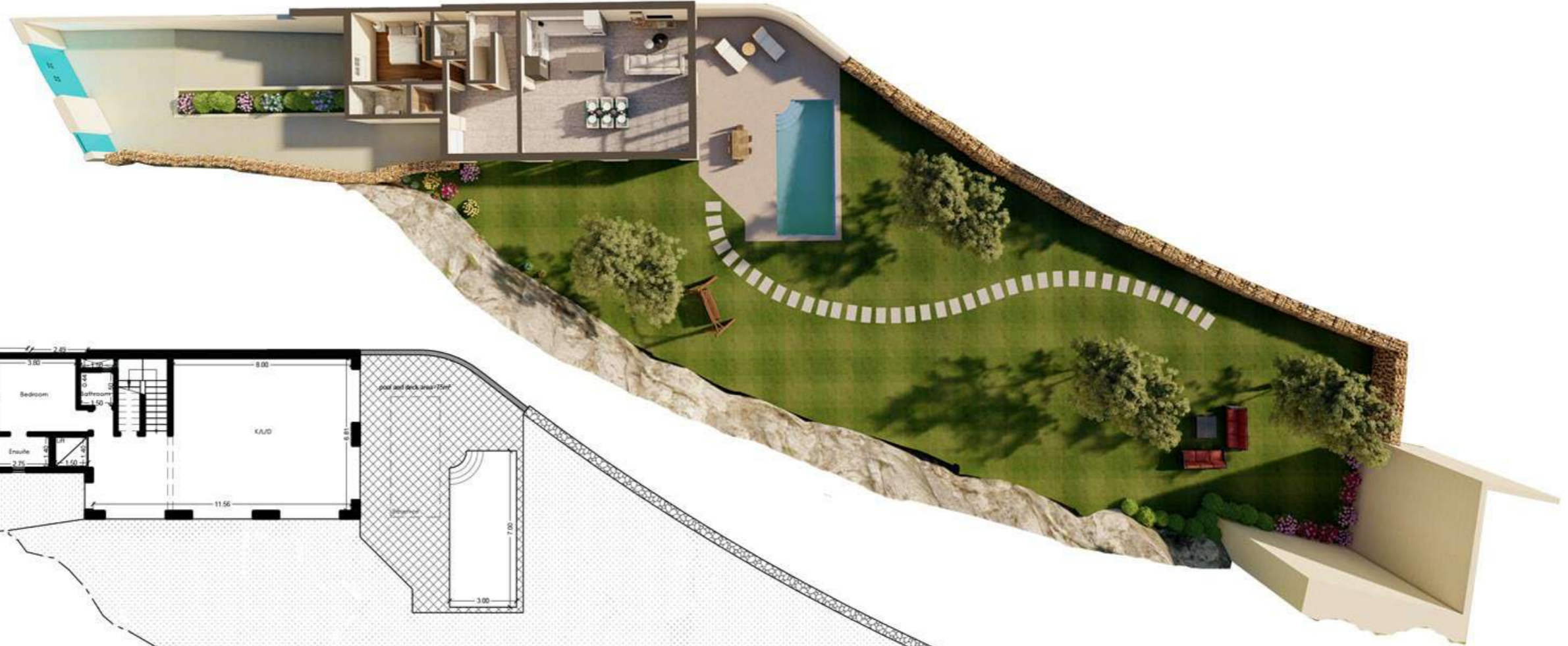
Plot : 04
Basement Floor (Level 0)

Artistic Impressions only
Beams may protrude. Minimum
internal height under beam is 2.1m

Internal : 111 m² External : 0 m²
Total Area : 111 m²

Dar Al-Kahla

Victoria



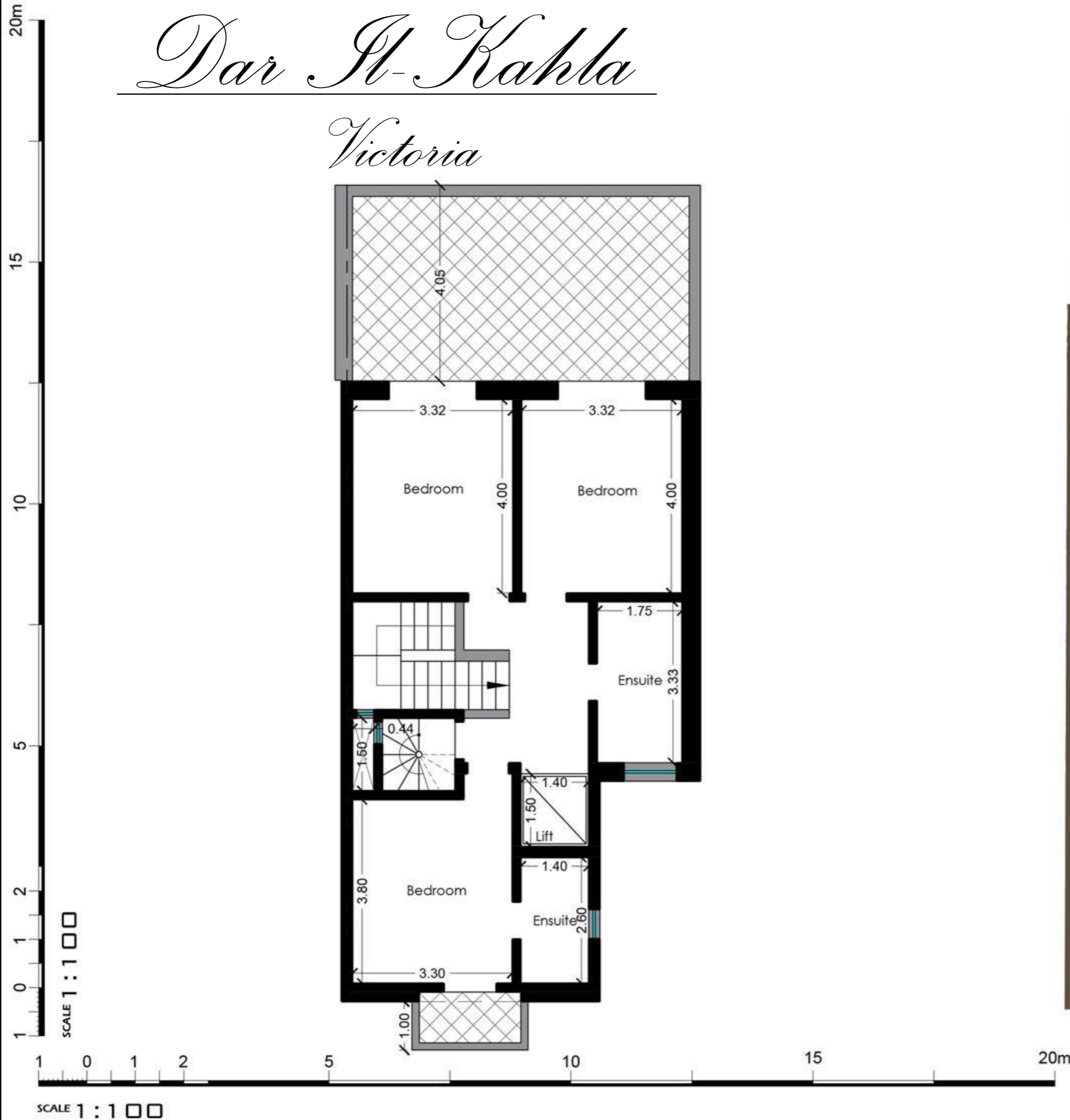
Plot : 04
Ground Floor (Level 1)

Artistic Impressions only
Beams may protrude. Minimum
internal height under beam is 2.1m

Internal : 113 m² External : 762 m²
Total Area : 875 m²

Dar Al-Kahla

Victoria



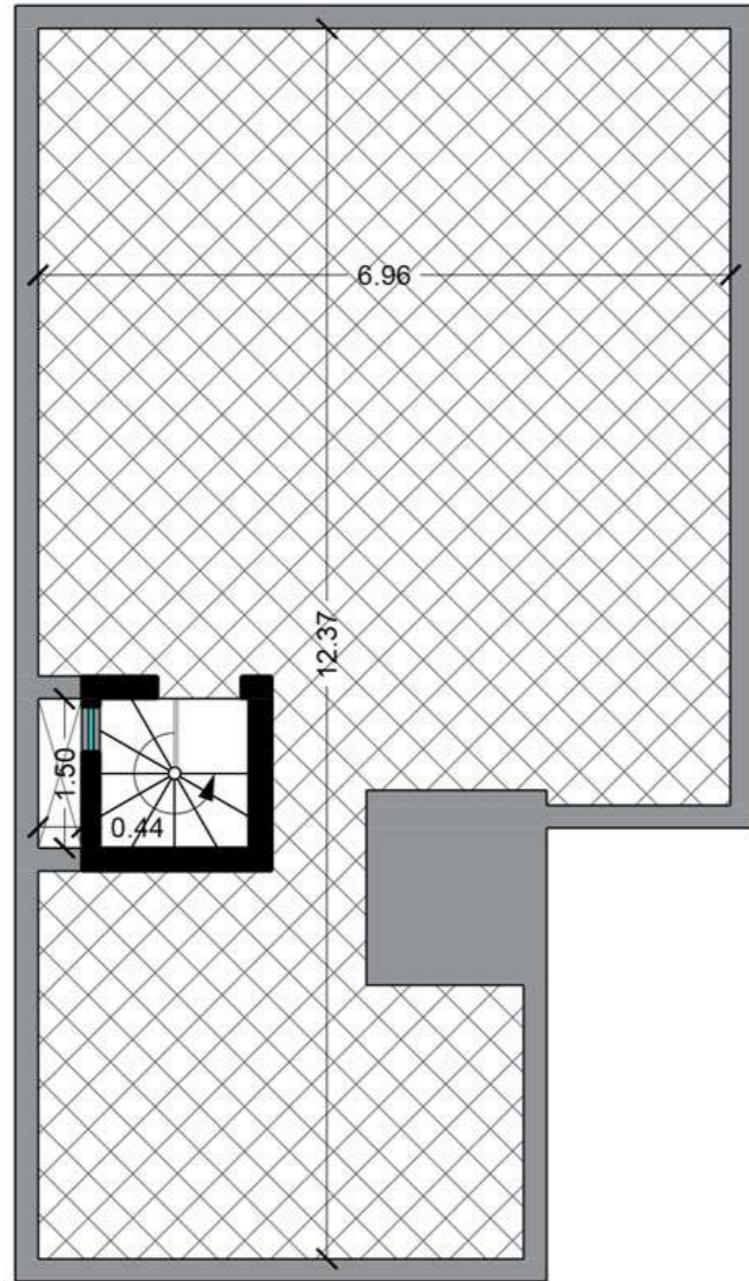
Plot : 04
First Floor (Level 2)

Artistic Impressions only
Beams may protrude. Minimum
internal height under beam is 2.1m

Internal : 82 m² External : 31 m²
Total Area : 113 m²

Dar Al-Kahla

Victoria



15
10
5
2
1
0
1
2

1 0 1 2 5 10 15

SCALE 1 : 1 0 0

SCALE 1 : 1 0 0

Plot : 04
Roof Floor (Level 3)

Artistic Impressions only
Beams may protrude. Minimum
internal height under beam is 2.1m

Internal : 0 m² External : 80 m²
Total Area : 0 m²